



MONTHLY MEMBERSHIP PROGRESS REPORT

District 324A3

Results as of: 06/30/2018

GMT: N S SANKAR

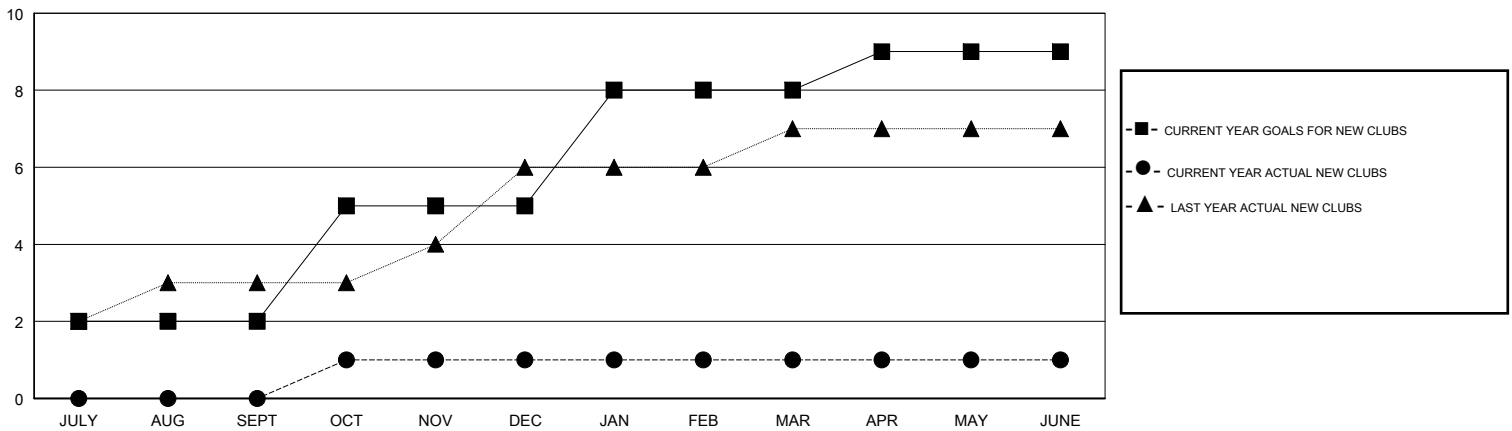
LOCATION INDIA

GMT CA

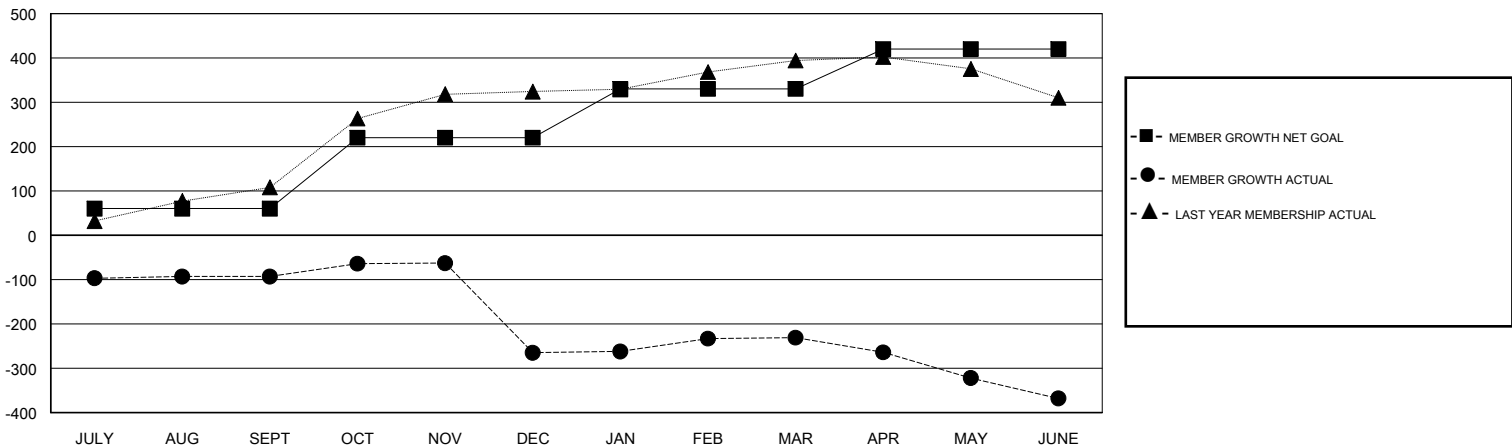
Clubs			
RESULTS FOR 2017-2018			
QUARTER	NEW CLUB GOAL	NEW CLUBS	DROPPED CLUBS
JULY/AUG/SEPT	2	0	0
OCT/NOV/DEC	3	1	7
JAN/FEB/MAR	3	0	1
APR/MAY/JUNE	1	0	1

Members			
RESULTS FOR 2017-2018			
QUARTER	MEMBER GROWTH NET GOAL	MEMBER GROWTH ACTUAL	DROPPED MEMBERS ACTUAL (including transfers)
JULY/AUG/SEPT	60	61	153
OCT/NOV/DEC	160	64	235
JAN/FEB/MAR	110	146	70
APR/MAY/JUNE	90	187	315

GOALS AND ACTUAL NEW CLUBS CUMULATIVE



GOALS AND ACTUAL MEMBERS CUMULATIVE



DROPPED CLUBS: 9	67 CLUBS OF 95 ADDED 1 OR MORE NEW MEMBERS	<u>GENDER DISTRIBUTION</u>	
DROPPED MEMBERS		MALE	2,883 (89.17%)
DECEASED	14	FEMALE	350 (10.83%)
CLUB CANCELLED	223	Women Percentage Fiscal Year Goal: 50%	
OTHER	536	TOTAL FAMILY UNIT MEMBERS	0
TOTAL	773	FAMILY MEMBERS PAYING HALF DUES	0

[CLICK HERE FOR CUMULATIVE MEMBERSHIP DATA](#)